

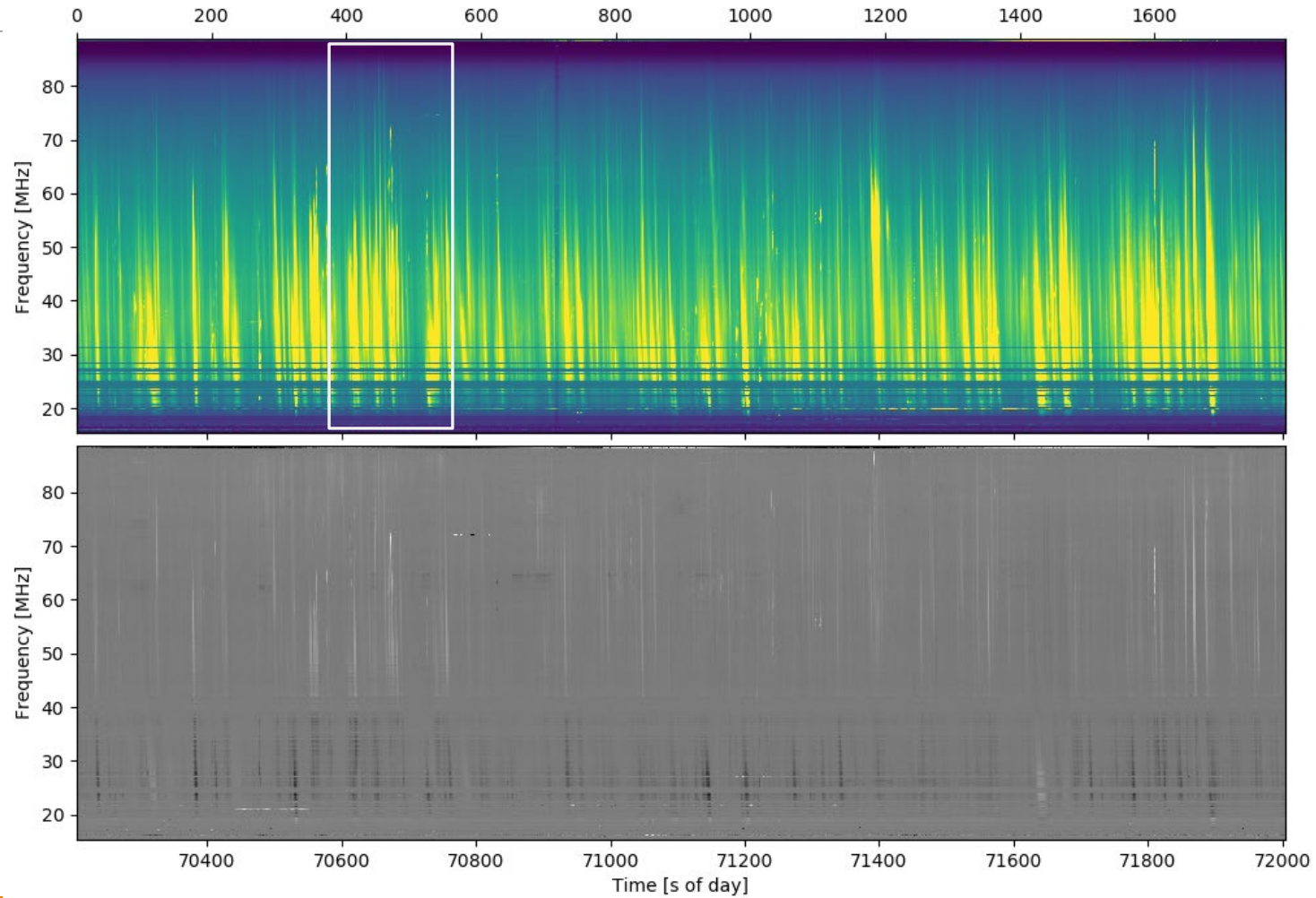
OVRO LWA Examples

2022-06-16/17

DALE GARY, NJIT

30-minute scan at 1-s resolution

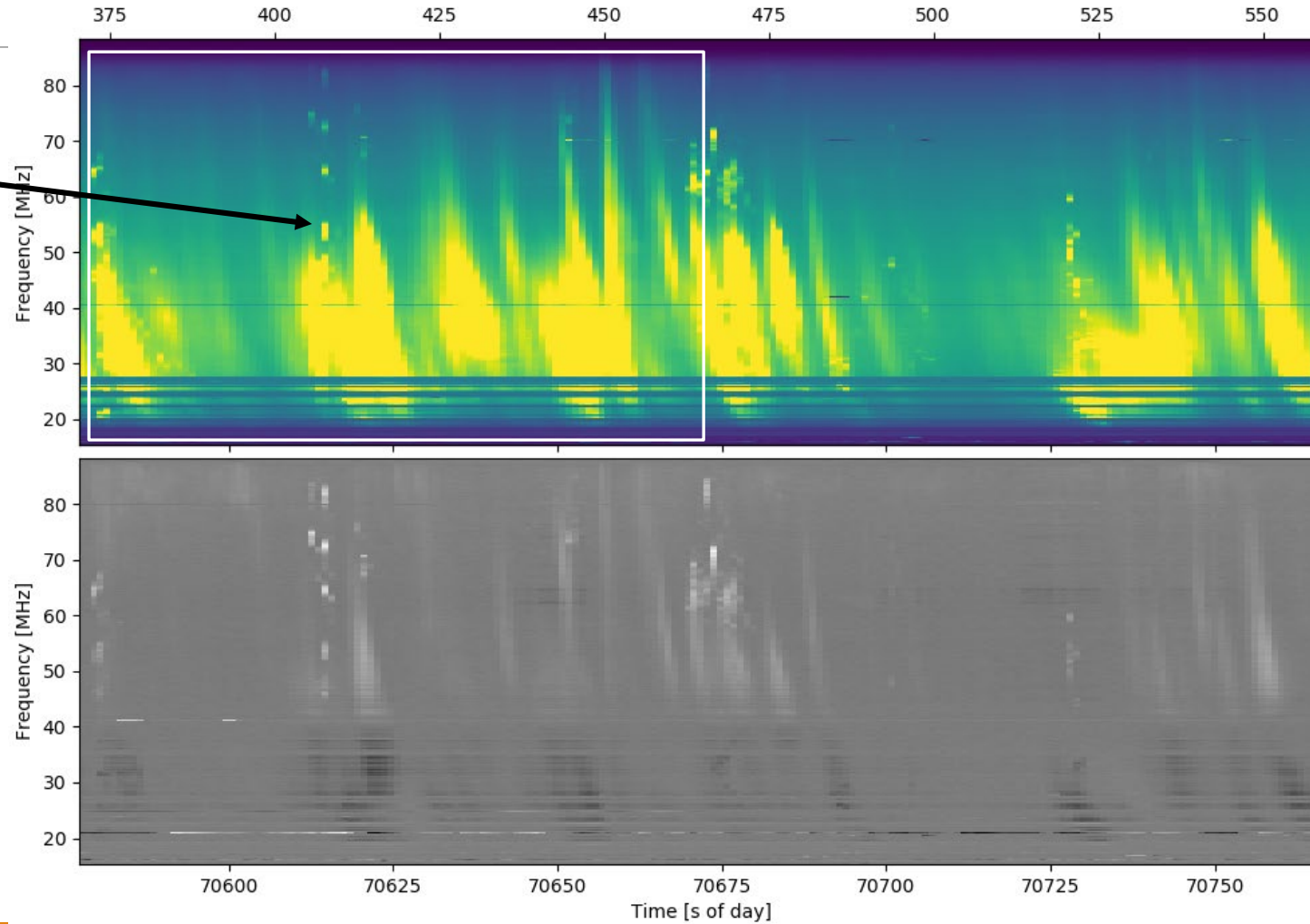
OVRO_LWA I/P Data for 2022-06-17 19:30:05-20:00:04



Same scan, zooming in with the mouse

OVRO_LWA I/P Data for 2022-06-17 19:30:05-20:00:04

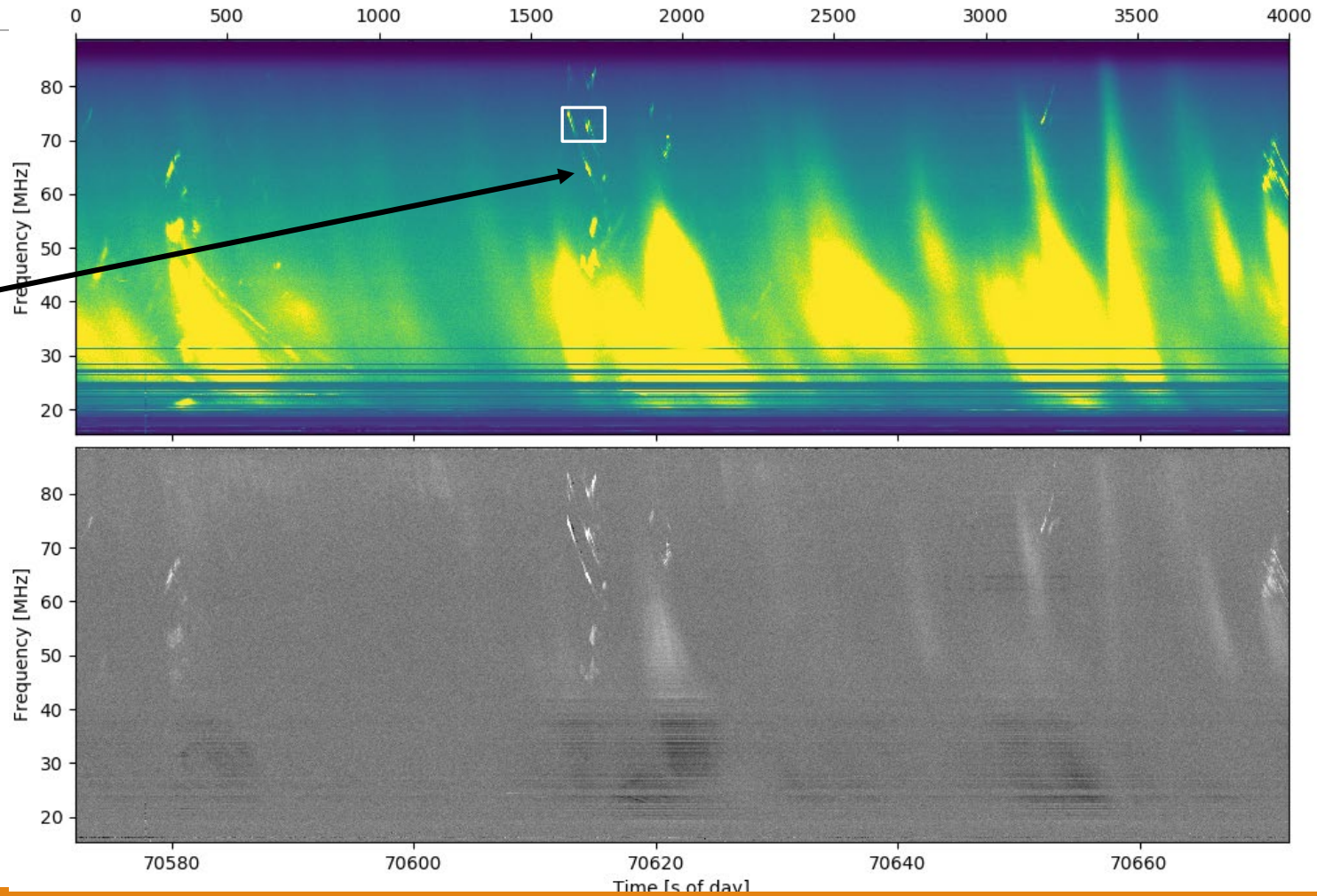
What is this
vertical
structure?



Read in Data with 25 ms Resolution

OVRO_LWA I/P Data for 2022-06-17 19:36:12-19:37:52

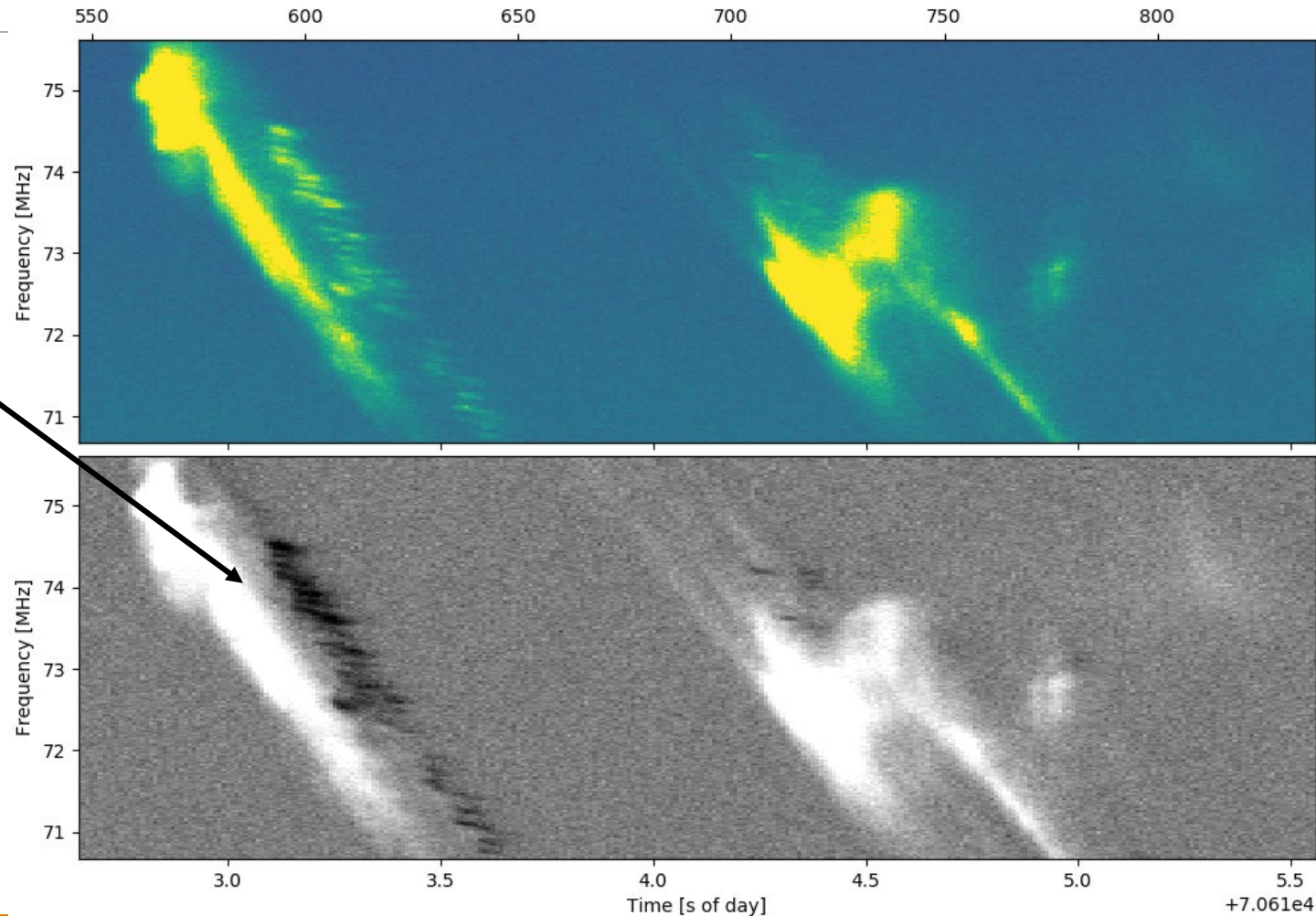
It now
resolves into
both positive
and negative
drift bursts



Read in Data with 10 ms Resolution

OVRO_LWA I/P Data for 2022-06-17 19:36:47-19:36:57

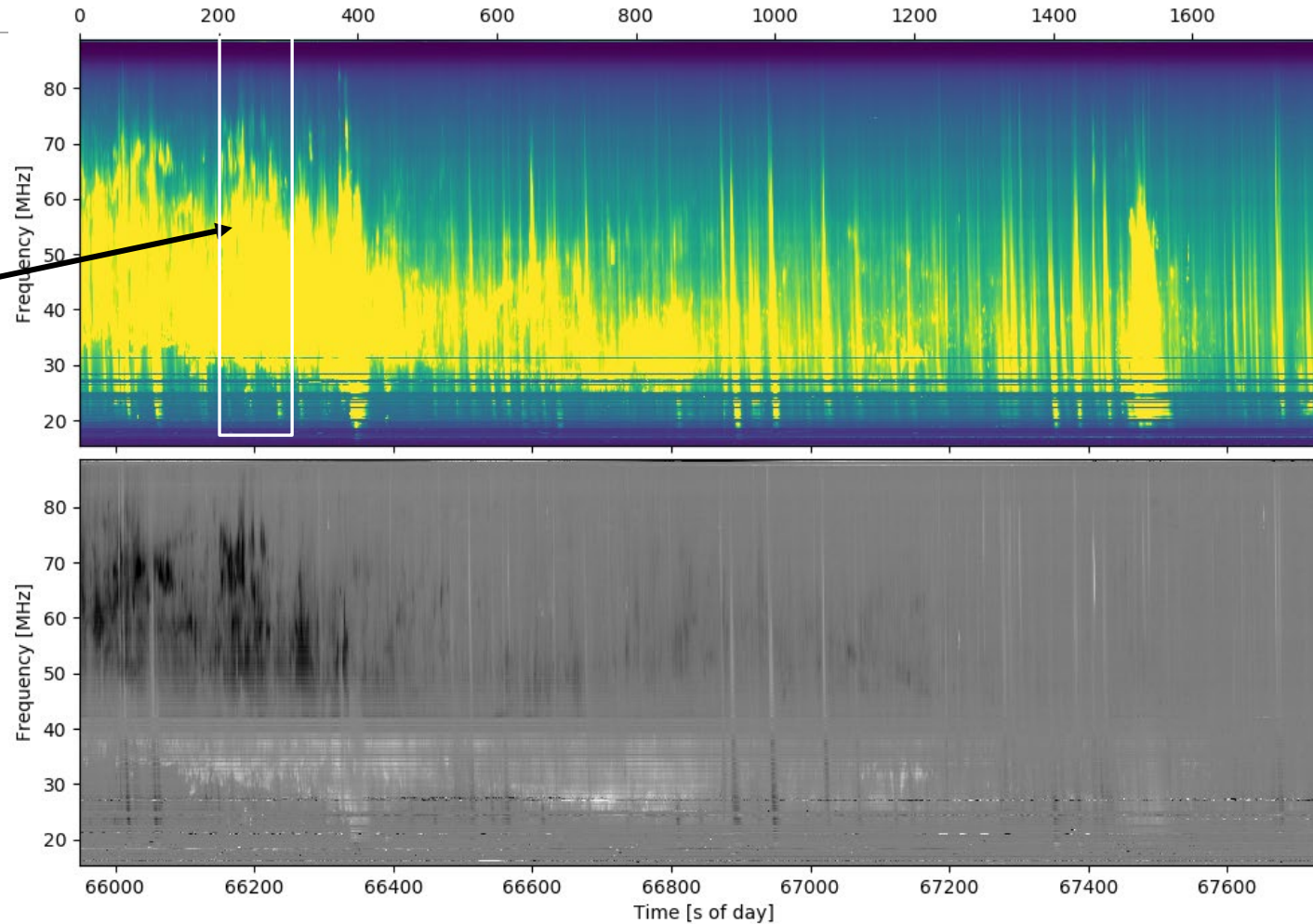
At this resolution, a huge amount of detail including opposite sense of polarization is revealed.



1-s Resolution Type IV Emission

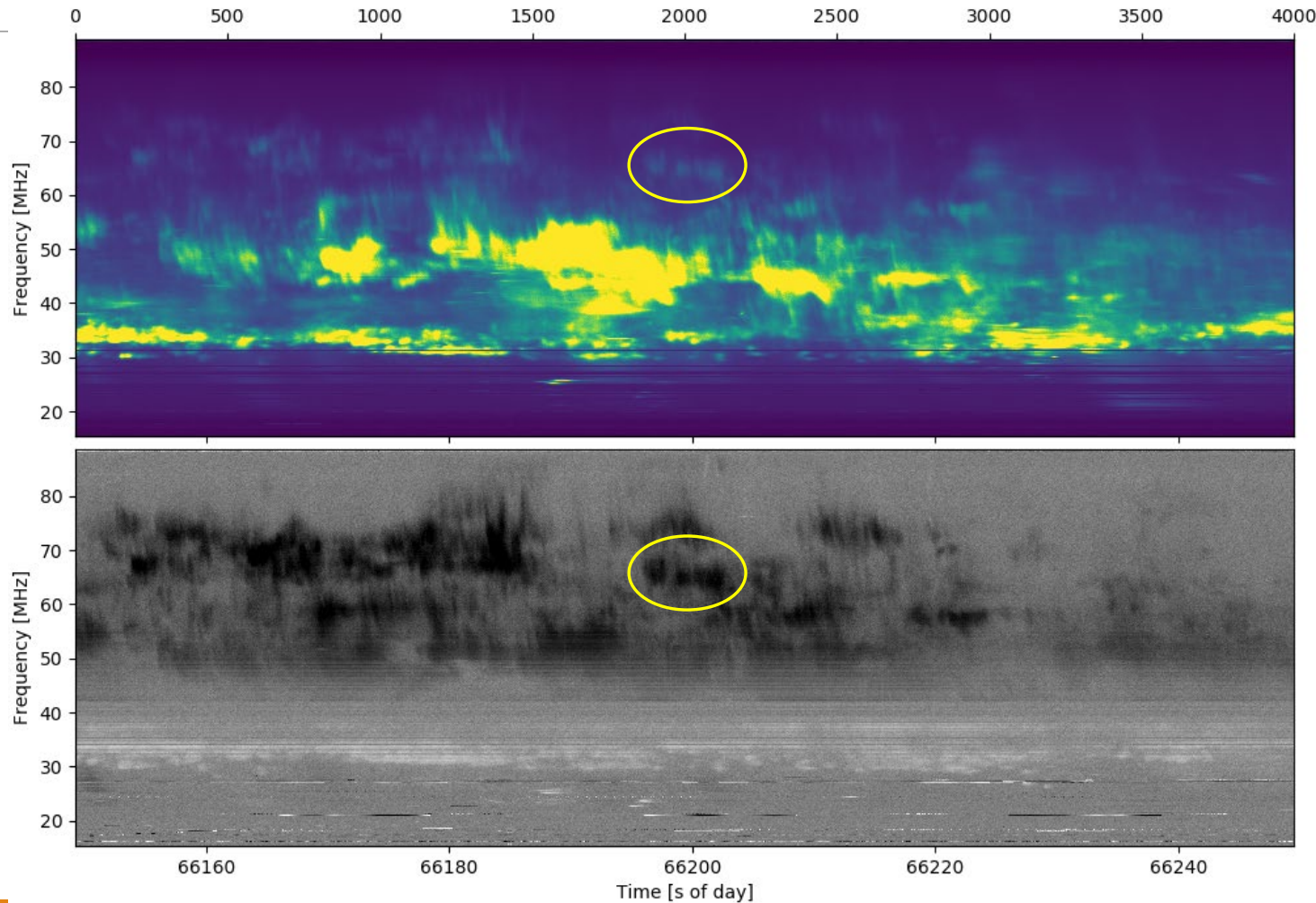
OVRO_LWA Data for 2022-06-16 18:19:08-18:49:04

This is a post-flare time with non-type III bursts visible.



100-s period with 25-ms Resolution

OVRO_LWA Data for 2022-06-16 18:22:29-18:24:09



Lots of structure is revealed. The LWA polarization is not calibrated, so matching up features is tricky.